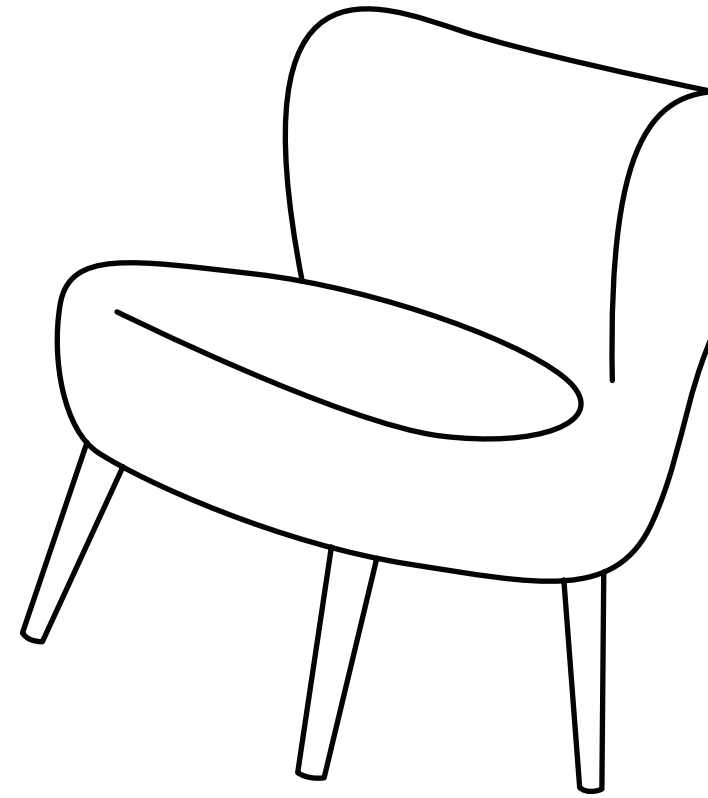
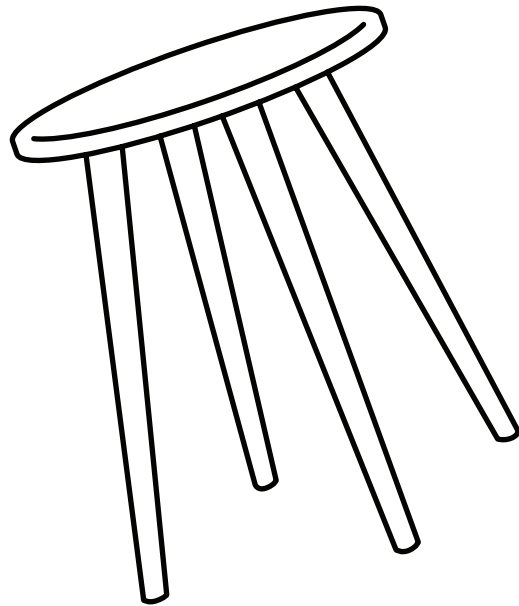


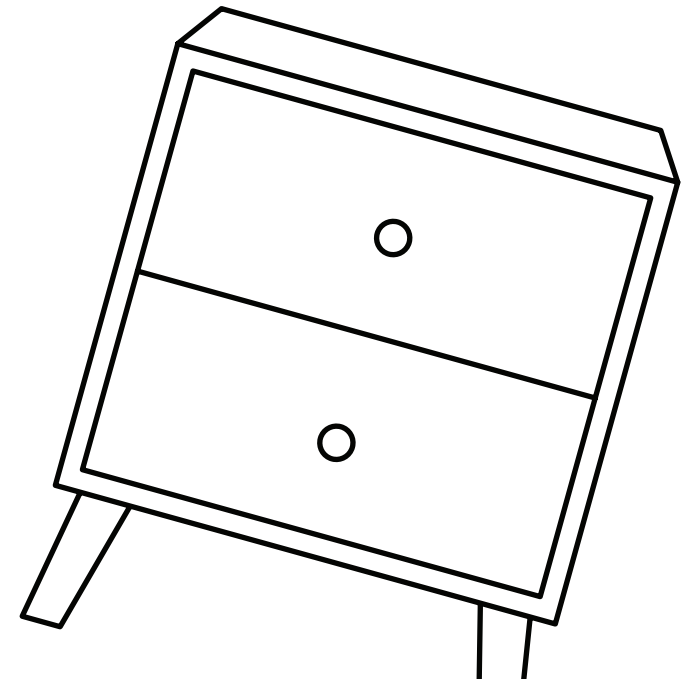
Hello,
I've arrived!



Now that I'm here you are only one
flat-pack away from transforming
your home.



Mocka.



Thank you for supporting us.

We believe design belongs to everyone. From materials and processes to safety testing, production and delivery, we are passionate and committed to bringing you the best possible product so you can create beautifully functional spaces to feel comfortably you.

Here are a few assembly tips before you get started:



Make Time

The first step to all seamless assembly is taking a moment to carefully read through the instructions—you are already on your way to creating a beautifully functional space!



Set The Mood

Put on your favourite playlist, order that pizza and pour yourself a drink to get in the mood!



Tool Check

Layout the instructions, screws and panels to check you have everything you need. A blanket or soft floor rug will help protect your new favourite item from scratches and a drill will speed up the assembly too!



Room Reveal

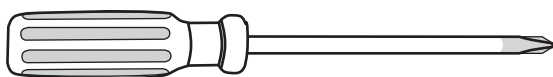
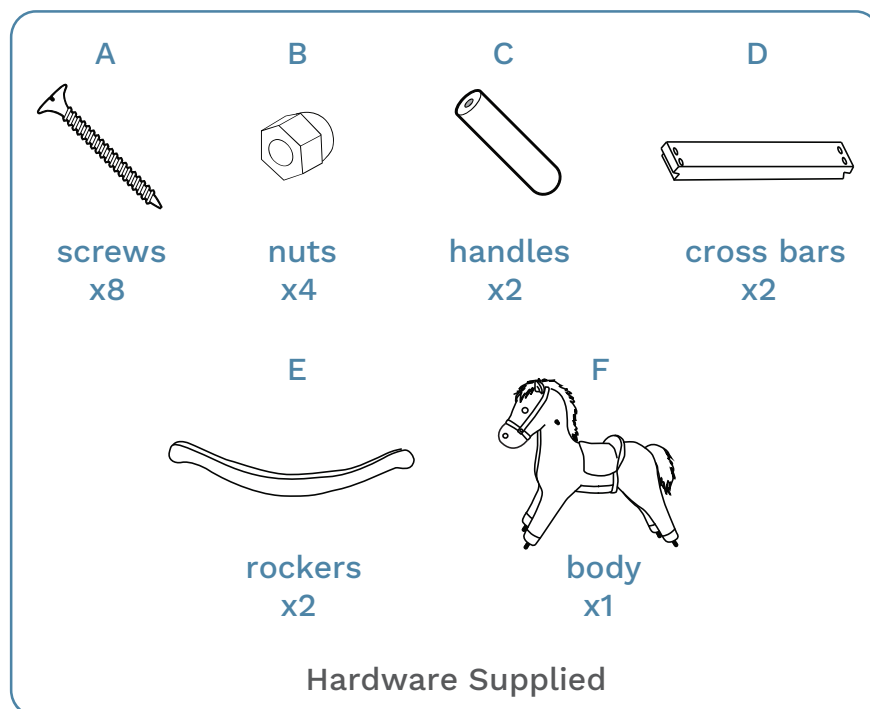
You did it! Take a step back and enjoy the moment. Don't forget to recycle any packaging and share a pic of your room reveal - we love seeing how you transform your home! Tag us @mockaaustralia/@mockaanz

Happy flat-packing!

The Mocka Team

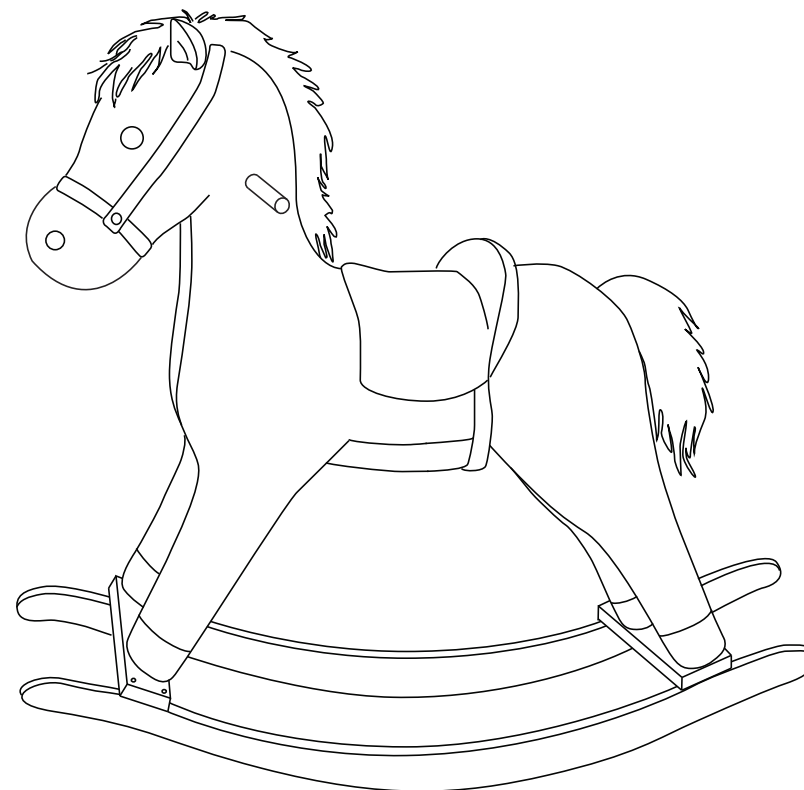
Kids Rocking Horse

Thank you for purchasing Kids Rocking Horse. Please follow the manufacturer's assembly instructions in detail.



Phillips screwdriver required.

For quicker assembly, we recommend the use of a power drill on a low-speed setting.



WARNING: Due to the small size of the hardware and the sharp points of the screws, they are potentially hazardous.

Keep all assembly parts and packaging materials out of reach of children

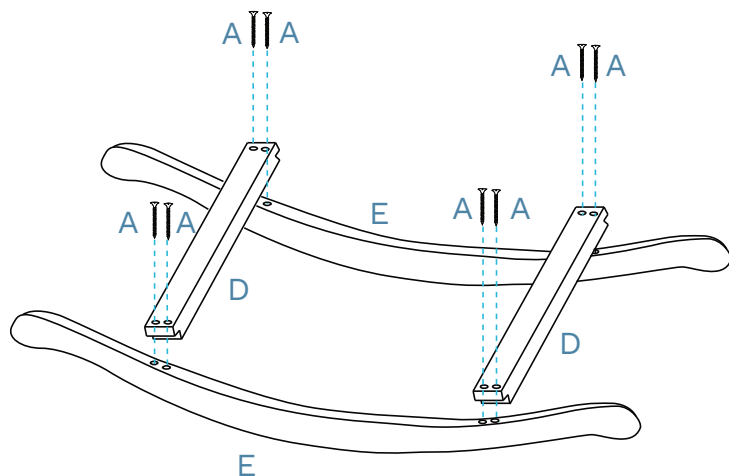
Retain packaging information for future reference

Adult assembly required

Recommended age 18 months +

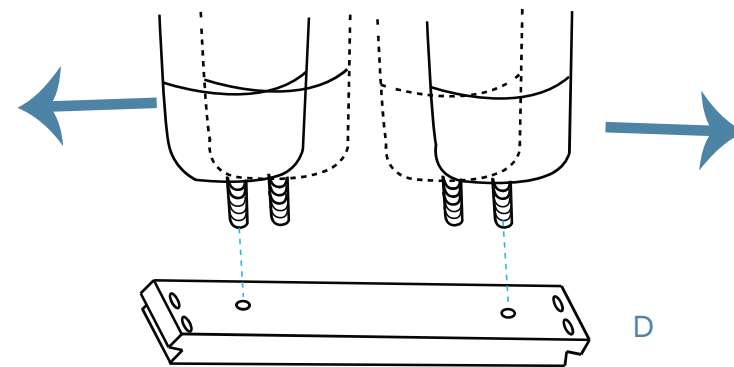
Kids Rocking Horse

1



Attach 2 x cross bars (D) to 2 x rockers (E) and secure with 8 x screws (A). Tighten with a screwdriver.

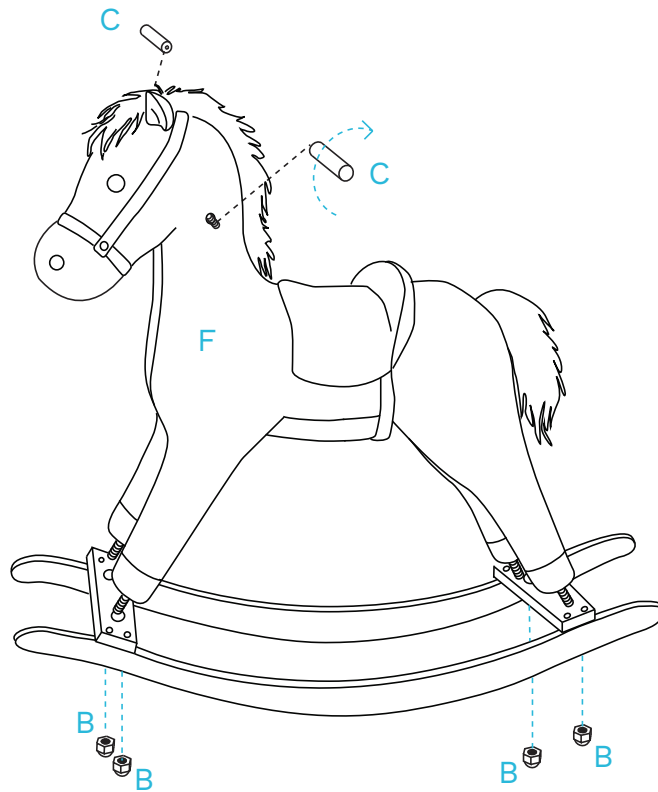
2



Insert the ends of the legs into the 2 x cross bars (D) holes as shown. If the holes on the cross bar (D) are not lining up, place one leg in the hole on the cross bar (D) and then apply pressure to get the other leg to match up with the second hole on the cross bar (D).

Kids Rocking Horse

3



Attach 1 x body (F) to the assembled rocker and secure with 4 x nuts (B) and tighten. Attach 2 x handles (C) onto the body (F) as shown and rotate to tighten.